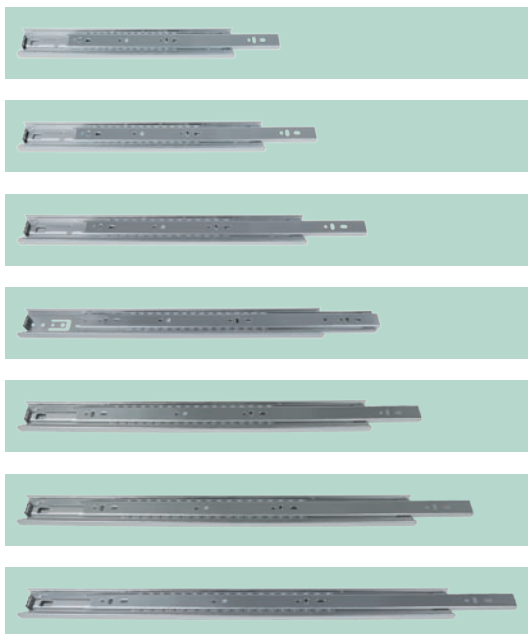


# BALL BEARING DRAWER RUNNERS/ DRILLING JIG

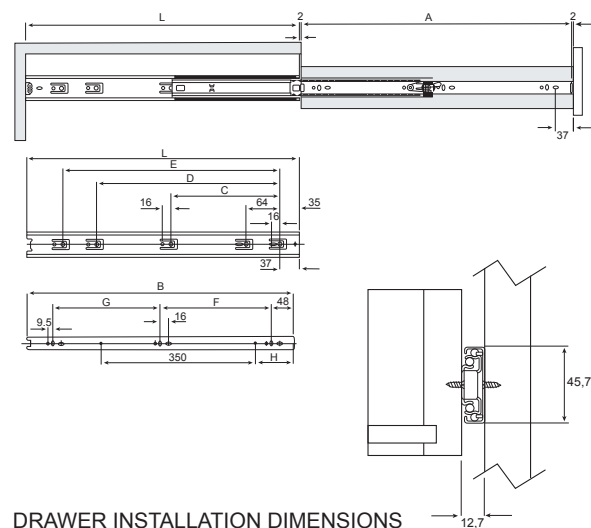


## 45mm BALL BEARING RUNNERS

- Full Extension
- Static load: 60kg
- Dynamic load: 50kg
- Side Fixing
- Unlocking Device
- Tested to 80,000 cycles

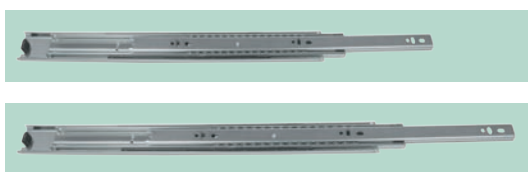
TS611	300mm BALL BEARING RUNNER
TS612	350mm BALL BEARING RUNNER
TS613	400mm BALL BEARING RUNNER
TS614	450mm BALL BEARING RUNNER
TS615	500mm BALL BEARING RUNNER
TS620	550mm BALL BEARING RUNNER
TS621	600mm BALL BEARING RUNNER

## SIDE FIXING POSITIONS



## DRAWER INSTALLATION DIMENSIONS

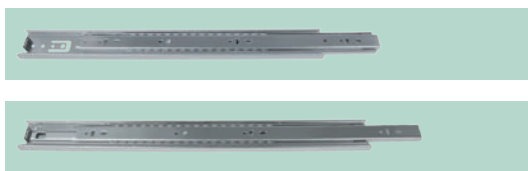
L	A	B	C	D	E	F	G	H
300	300	295	224	-	-	96	128	-
350	350	345	224	-	-	128	128	-
400	400	395	224	288	-	160	160	-
450	450	445	224	352	-	160	192	81
500	500	495	224	352	416	192	224	-
550	550	545	224	352	416	224	224	-
600	600	595	224	352	480	256	256	-



## 36mm BALL BEARING RUNNERS

- Full Extension
- Static load: 60kg
- Dynamic load: 50kg
- Side Fixing
- Unlocking Device
- Tested to 80,000 cycles

TS714	450mm BALL BEARING RUNNER
TS715	500mm BALL BEARING RUNNER



## 45mm BALL BEARING RUNNERS ECONO

- Full Extension
- Static load: 60kg
- Dynamic load: 50kg
- Side Fixing
- Unlocking Device

TS909	450mm ECONO BALL BEARING RUNNER
TS910	500mm ECONO BALL BEARING RUNNER



## AOP200 DRILLING JIG FOR PRIME/ EXCEL/ STANDARD RUNNERS



• Specifications and design subject to change without notice • All dimensions in millimetres (nominal)