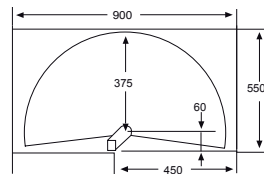


# FGV CORNER CAROUSEL



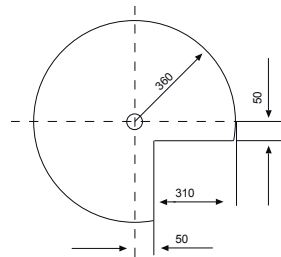
WCT750  
**1/2 CAROUSEL**  
 Ø 750  
 Suitable for installation  
 in 800mm or 900mm  
 Reach-in Cupboard

Load capacity 20Kg



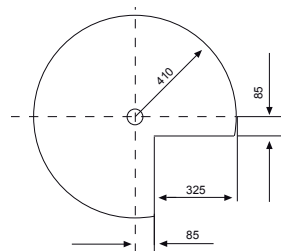
WCT720  
**3/4 CAROUSEL**  
 Ø 720  
 Suitable for installation  
 in 800mm or 900mm  
 Corner Cupboard

Load capacity 20Kg



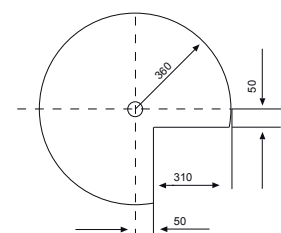
WCT820  
**3/4 CAROUSEL**  
 Ø 820  
 Suitable for installation  
 in 900mm  
 Corner Cupboard

Load capacity 20Kg



WCT720CH  
**3/4 CAROUSEL**  
 Ø 720  
 Suitable for installation  
 in 800mm or 900mm  
 Corner Cupboard

Load capacity 20Kg



• Specifications and design subject to change without notice • All dimensions in millimetres (nominal)

